

HIGHLIGHTS

Performance

- Faster application response time
- Reduced application runtime

Availability

- Superior application resiliency
- 99.9999% Uptime

Simplicity

- Easier deployment
- Better response to business needs

Affordability

- Lower operating costs

VIOLIN QV2020

Simple, Fast, Affordable High Performance NVMe Storage Platform



True Active/Active Controllers

- Increase uptime: No waiting in the event of a failover
- Increase performance: Use both controllers to read and write data to a LUN or volume

Performance-Optimized Data Reduction

- Selectable data reduction by volume

Enhanced Matrixed RAID Data Allocation

- Up to 24 individually hot-swappable NVMe SSDs
- Writes to SSD's balanced across drives for better performance and wear

Software for Resilient In-place Media Protection

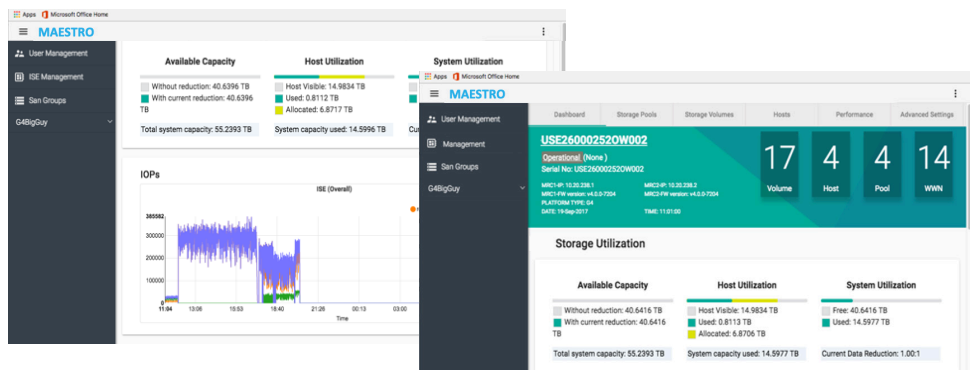
- Less frequent drive replacement
- Global parity and spare allocation
- Failed drives do not have same urgency for replacement as traditional arrays

Web-based Management Interface

- Simplified management with MAESTRO
- Support for multi-system management through single session
- At-a-glance and in-depth performance metrics
- Customizable widget-based layout

Data Protection

- Always shipped with 256 bit AES Encrypted Drives
- Keep your data safe at no extra cost



Enterprise Data Services

- ✓ Data Reduction by Volume
- ✓ High Availability
- ✓ Snapshots
- ✓ Replication
- ✓ QoS
- ✓ vCenter Plug In
- ✓ Encryption
- ✓ Management REST API
- ✓ Simple Web-based Management
- ✓ Visualization
- ✓ Monitored Telemetry
- ✓ Predictive Analytics

VIOLIN QV2020 PRODUCT SPECIFICATIONS

Performance <1ms LATENCY @ 500,000 IOPS

Bandwidth (max) 7.1 GB/sec

CAPACITY

Usable (max) (min 12 NVMe SSDs) 15 TB to 479 TB (max 24 NVMe SSDs)

Effective (max)* 60 TB to 1.7 PB

CONNECTIVITY

Hosts 2U Dual-Controller Active/Active
16Gb FC – 4 ports per controller
10/25Gb iSCSI

PHYSICAL

Dimensions 2RU — 3.4" x 16.88" x 33"
Rail kit supports 20" to 28.5" rack depth

Weight 64 lb. / 29.1 kg — (without drives)

Power & Cooling Two hot-swappable 2000 Watt PSUs, 12V output @ 130A (2000watts)
Auto ranging 200-240VAC, 50-60Hz input. Current sharing
C13-C14 Connectors
Operating Temperature Range 5°C to 35°C

*Effective capacity assuming 4:1

